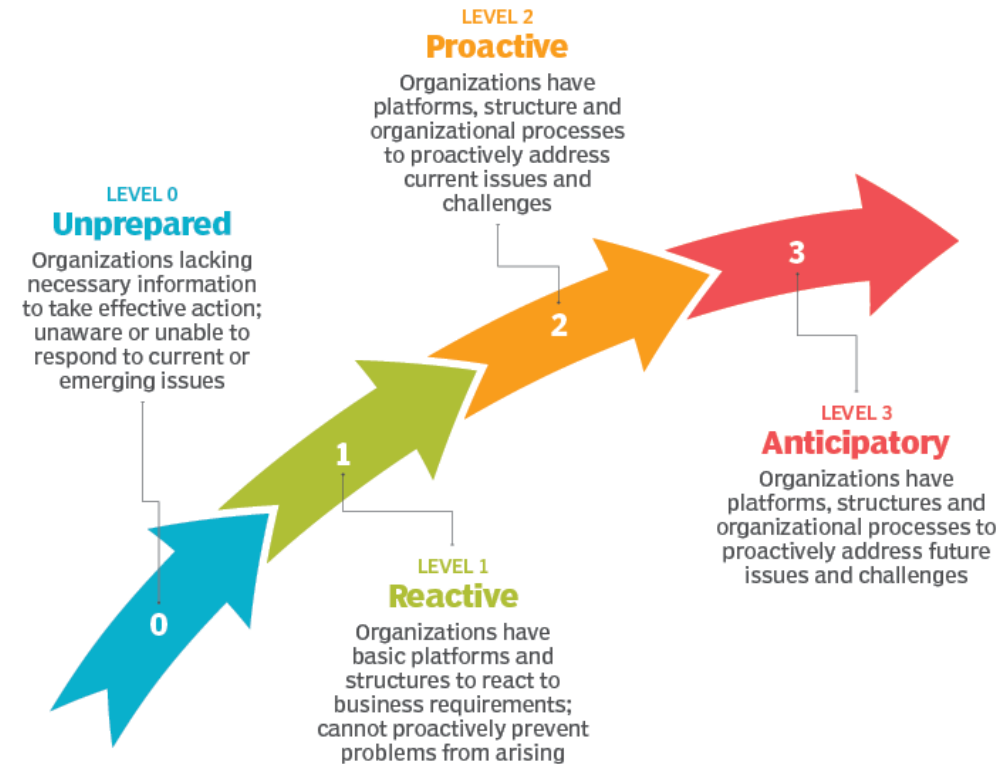




Our Cybersecurity Evolution

The
continuous
journey to
achieve the
next level...

Cybersecurity maturity model





Unprepared...
the most
uncomfortable
place to be

Rochelle began it's Cybersecurity Journey in 2019

- Like many organizations, we acknowledged that cybersecurity was a serious issue. It was crucial for us to prioritize and protect our organization's digital information and assets.



Reactive...



Being unprepared forced us to be in a reactive state.



Automated notifications were not in place, and staff had to make us aware when there was a concern.



This caused a slower response to issues and impacted productivity.



Worked with an insurance consultant to customize a cyber liability policy designed to address our specific needs and vulnerabilities.



Hired a consulting company to assist us in creating a more robust and proactive response.

Proactive...



CREATED A CYBERSECURITY POLICY



CREATED A CYBER AND DATA
SECURITY INCIDENT RESPONSE PLAN

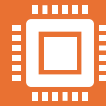


IMPLEMENTED A ROBUST AI
ENDPOINT PROTECTION PLATFORM
AND AUDIT LOGGING SYSTEM THAT
INTEGRATES WITH THE SOC
(SECURITY OPERATIONS CENTER)



PROVIDE ONGOING EDUCATION FOR
STAFF

Anticipatory... cybersecurity challenges we expect and are preparing for



Ongoing cost increases for hardware, software licensing, and staff



Artificial Intelligence driven attacks – (AI) is seemingly everywhere.



Evolving tactics of Cyberthreat actors



Potential for Geopolitical tension, including espionage, disruption of critical infrastructure, and economic harm